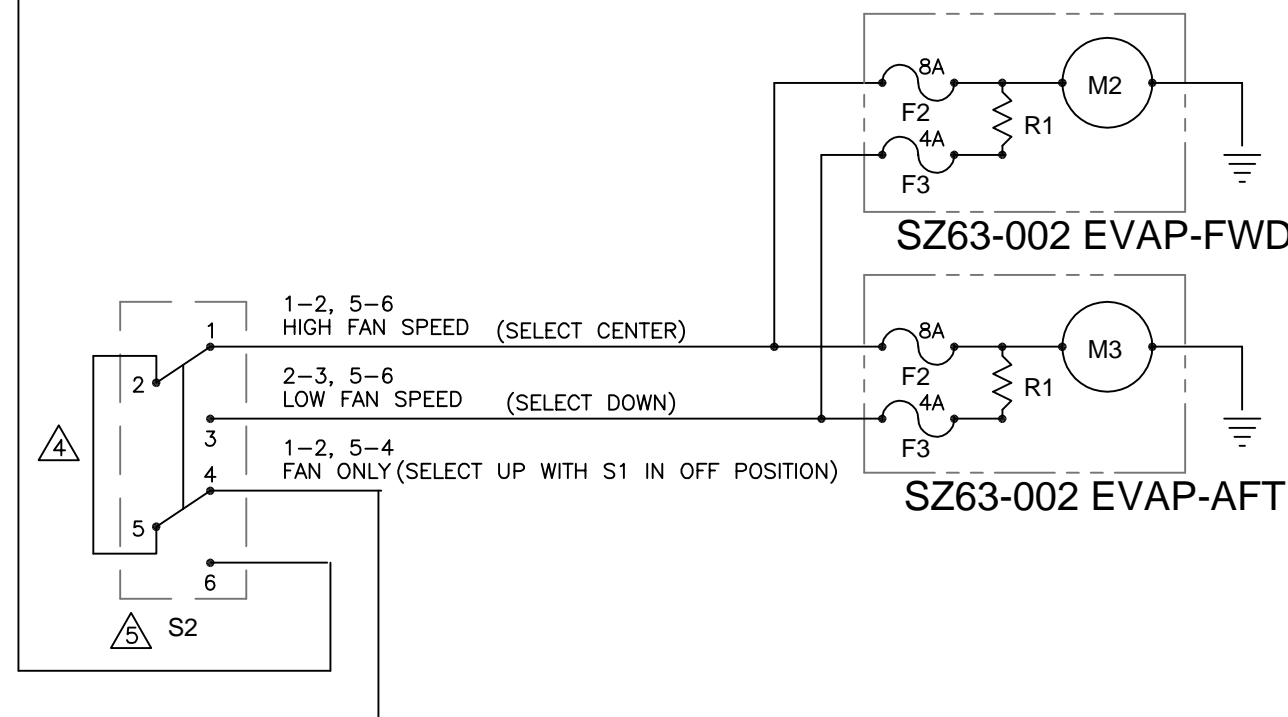
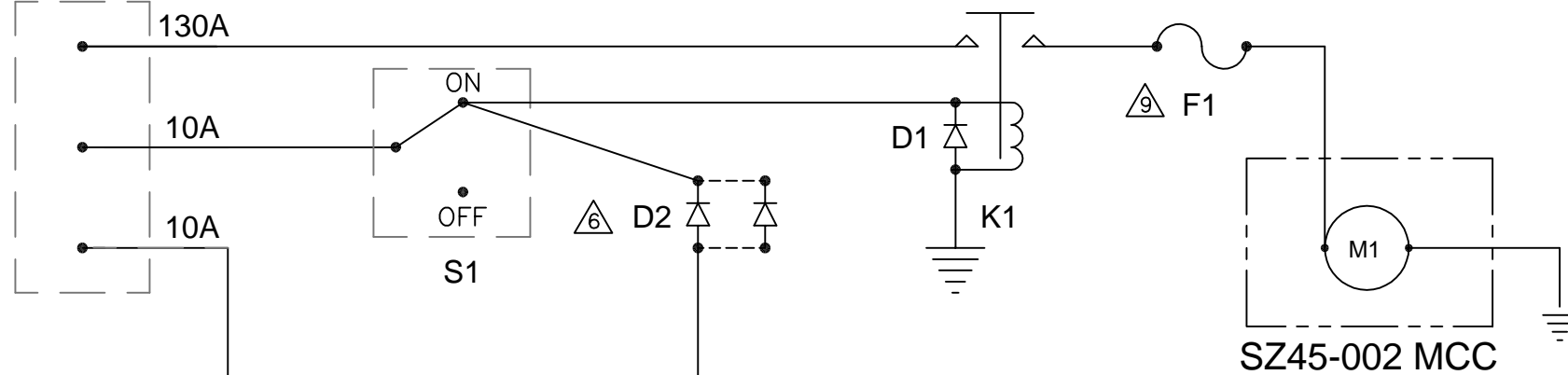


LIST OF REVISIONS

REV	DESCRIPTION	DATE	APPVD
IR	INITIAL RELEASE	11-14-03	KJZ
A	1. ADD: D2 TO F/D & L/M. 2. ADD: D1, D2, F2, F3, M1, M2, M3, R1 CALL OUT TO L/M. 3. ADD: NOTES 6, 7, 8, & 9. 4. REDRAW: MCC CIRCUIT.	6-30-08	KJZ

ACFT POWER



R1	SZ63-032-1	RESISTOR
M3	SZ63-021-(X)	MOTOR, BLOWER
M2	SZ63-021-(X)	MOTOR BLOWER
M1	Z99-800-1	MOTOR, COMP DRIVE
D2	6A10	DIODE
D1	DS030-0202	DIODE
S2	MS27407-4	SWITCH
S1	MS24523-22	SWITCH
F3	MDL-8	FUSE
F2	MDL-4	FUSE
F1	ANL130	CURRENT LIMITER
K1	DS032-1	RELAY ASSY, w/DIODE

ALT: 1N4007
ALT: MS24171-D2
REFER TO SPECIFIC AIRCRAFT INSTALLATION FOR DETAILS

- NOTES:
- USE M22759/16-(xx) WIRE. REFER TO A.C.43.13-2B FOR WIRE SIZE.
 - COMPRESSOR DRIVE MOTOR Z99-800-1 IS RATED FOR CONTINUOUS DUTY, 150A @ 28 VDC.
 - TERMINAL END LUGS TO MEET MS25036, SPLICES TO MEET MS25181.
 - JUMPER 2 TO 5 ON SWITCH S2.
 - S2 KEYWAY MUST BE UP.
 - IF ONLY M2 OR M3 IS USED USE 1EA DIODE D2 (6A10). IF BOTH M2 AND M3 ARE USED INSTALL 2EA D2 DIODE IN PARALLEL.
 - ZEE SYSTEMS, INC. RELAY ASSY w/DIODE P/N: DS032-1 HAS DIODE D1 P/N DS030-0202 INSTALLED. SEE L/M FOR ALTERNATE DIODE.
 - IF ALTERNATE RELAY K1 P/N MS24171-D2 IS USED DIODE D1 (OR ALTERNATE D1) MUST BE INSTALLED.
 - FOR CURRENT LIMITER US BASE P/N 4164.

PROPRIETARY DATA NOTIFICATION
 THE INFORMATION CONTAINED HEREIN IS PROPRIETARY TO ZEE SYSTEMS, INC. DISCLOSURE, REPRODUCTION OR ANY OTHER USE OR DISSEMINATION OF THIS INFORMATION IS FORBIDDEN WITHOUT WRITTEN AUTHORIZATION FROM ZEE SYSTEMS, INC., SAN ANTONIO, TX.

NO.	REQ'D.	PER ASSY	PART NO.	NAME	STOCK SIZE	MATERIAL	MAT'L SPEC
			x				
LIST OF MATERIAL							
				UNLESS OTHERWISE NOTED	DRAWN BY	K.ZAIONTZ	11-14-03
				.X+/- .060	CHECK		
				.XX+/- .030	STRESS		
				.XXX+/- .010	ENGR	K.ZAIONTZ	11-14-03
				ZEE SYSTEMS, INC.		DWG NO.	
				406 W. Rhapsody San Antonio, TX 78216 USA		SZ45-WD-F	
				NEXT ASSY		REV	
				MODEL		A	

TYPICAL SCHEMATIC (FUNCTIONAL)

DWG SIZE 11X17 SCALE N/A SHT 1 OF 1